



30th June, 2009

Designer Minna Hepburn was inspired to start her label after years of collecting antique textiles, lace and beautiful pieces found at her local markets in Dorset,

Her love for antique markets and times gone by can vividly be seen in her designs that are rich in hand embellished details and the use of antique lace and buttons. These features add to the uniqueness of her pieces that personify her "Minna" label.

Environmental considerations are fundamental to her design process. All fabrics are either fair trade, recycled or organic. The collection is 100% made in the UK thus minimizing waste and allowing all the remnants to be used in the decoration process.

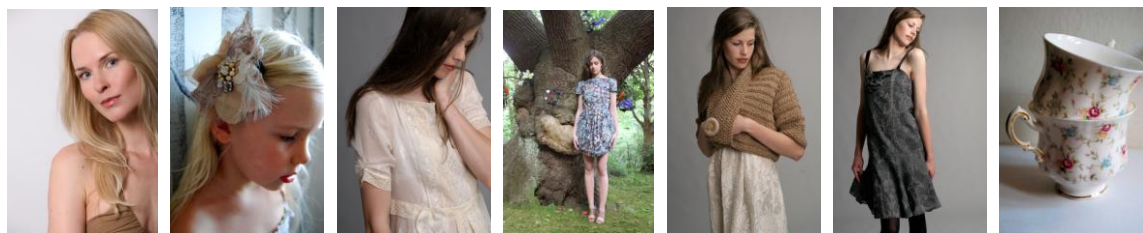
Since launching her debut collection at the London Fashion in August 2008, she has been featured in magazines such as Vogue, Easy Living and Cosmopolitan and attracted the attention of some prestigious stockists such as A La Mode and Koh Samui.

Due to high demand, she launched her online boutique in February 2009 and the children's range featuring her signature look of luxurious fabrics and hand embellished pieces.

Minna is currently launching her bespoke service in September 2009, where customers can send their own preferred fabrics or choose from our wide range of vintage fabrics and lace. This service will make our pieces even more personal adding our commitment and level of service.

The Home accessory range will be launched by the end of the year. She has already launched a scented candle in an antique tea cup that perfectly captures the essence of her brand.

For up to date press and stockist information, please visit our website, [www.minna.co.uk](http://www.minna.co.uk).



*Minna*

+44 (0) 77 963 34197

[minna@minna.co.uk](mailto:minna@minna.co.uk)

[www.minna.co.uk](http://www.minna.co.uk)